

## GnRH I Polyclonal Antibody

### Description

Product type	Primary Antibody
Code	BT-AP03634
Host	Rabbit
Isotype	IgG
Size	20ul, 50ul, 100ul
Immunogen	The antiserum was produced against synthesized peptide derived from human GnRH I. AA range:43-92
Mol wt	10380
Species reactivity	Human
Clonality	Polyclonal
Recommended application	IHC-p, ELISA
Concentration	1 mg/ml
Full name	GnRH I Antibody
Synonyms	GNRH1; GNRH; GRH; LHRH; Progonadoliberein-1; Progonadoliberein I

This product is for research use only, not for use in human, therapeutic or diagnostic procedure.

### Background

GNRH1 encodes a preproprotein that is proteolytically processed to generate a peptide that is a member of the gonadotropin-releasing hormone (GnRH) family of peptides. Alternative splicing results in multiple transcript variants, at least one of which is secreted and then cleaved to generate gonadoliberein-1 and GnRH-associated peptide 1. Gonadoliberein-1 stimulates the release of luteinizing and follicle stimulating hormones, which are important for reproduction. Mutations in this gene are associated with hypogonadotropic hypogonadism.

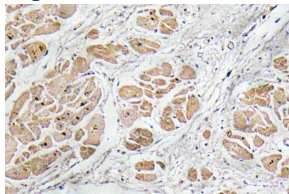
### Recommended Dilution

IHC: 1: 100 - 1: 300

ELISA: 1: 10000

Not yet tested in other applications.

### Images



Immunohistochemistry analysis of GnRH I antibody in paraffin-embedded human heart tissue.

### Storage

-20°C for one year

501 Changsheng S Rd, Nanhu Dist, Jiaxing, Zhejiang, China

Tel: 86 21 31007137 | E-mail: [save@bt-laboratory.com](mailto:save@bt-laboratory.com) | [www.bt-laboratory.com](http://www.bt-laboratory.com)