

MMRN2 Rabbit Polyclonal Antibody

Description

Product type	Primary Antibody
Code	BT-AP03643
Host	Rabbit
Isotype	IgG
Size	100ul, 50ul, 20ul
Immunogen	Synthesized peptide derived from human MMRN2
Mol wt	N/A
Species reactivity	Human, Mouse
Clonality	Polyclonal
Recommended application	WB
Concentration	1 mg/ml
Full name	MMRN2
Synonyms	MMRN2; Multimerin-2; EMILIN-3; Elastin microfibril interface located protein 3; Elastin microfibril interfacier 3; EndoGlyx-1 p125/p140 subunit

This product is for research use only, not for use in human, therapeutic or diagnostic procedure.

Background

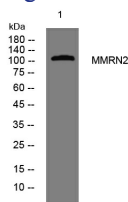
This gene encodes a protein belonging to the member of elastin microfibril interface-located (EMILIN) protein family. This family member is an extracellular matrix glycoprotein that can interfere with tumor angiogenesis and growth. It serves as a transforming growth factor beta antagonist and can interfere with the VEGF-A/VEGFR2 pathway. A related pseudogene has been identified on chromosome 6.

Recommended Dilution

WB: 1: 500 - 1: 2000

Not yet tested in other applications.

Images



Western blot analysis of lysates from HuvEc cells, primary antibody was diluted at 1:1000, 4°C overnight

Storage

-20°C for 1 year