

## MOB1(Phospho-Thr35) Rabbit Polyclonal Antibody

### Description

Product type	Primary Antibody
Code	BT-AP03647
Host	Rabbit
Isotype	IgG
Size	100ul, 50ul, 20ul
Immunogen	Synthesized phospho peptide around human MOB1 (Thr35)
Mol wt	N/A
Species reactivity	Human, Mouse, Rat
Clonality	Polyclonal
Recommended application	WB
Concentration	1 mg/ml
Full name	MOB1
Synonyms	MOB1 ;Thr35 ; MOB kinase activator 1A; Mob1 alpha; Mob1A; Mob1 homolog 1B; Mps one binder kinase activator-like 1B

This product is for research use only, not for use in human, therapeutic or diagnostic procedure.

### Background

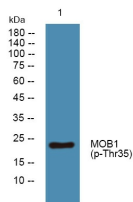
The protein encoded by this gene is a component of the Hippo signaling pathway| which controls organ size and tumor growth by enhancing apoptosis. Loss of the encoded protein results in cell proliferation and cancer formation. The encoded protein is also involved in the control of microtubule stability during cytokinesis. Several transcript variants encoding different isoforms have been found for this gene.

### Recommended Dilution

WB: 1: 1000 - 1: 2000

Not yet tested in other applications.

### Images



Western blot analysis of lysates from SW480 cells, primary antibody was diluted at 1:1000, 4°C overnight

### Storage

-20°C for 1 year

501 Changsheng S Rd, Nanhui Dist, Jiaxing, Zhejiang, China

Tel: 86 21 31007137 | E-mail: [save@bt-laboratory.com](mailto:save@bt-laboratory.com) | [www.bt-laboratory.com](http://www.bt-laboratory.com)