

MPP2 Rabbit Polyclonal Antibody

Description

Product type	Primary Antibody
Code	BT-AP03661
Host	Rabbit
Isotype	IgG
Size	100ul, 50ul, 20ul
Immunogen	Synthesized peptide derived from human MPP2
Mol wt	63360
Species reactivity	Human, Mouse
Clonality	Polyclonal
Recommended application	WB
Concentration	1 mg/ml
Full name	MPP2
Synonyms	MPP2

This product is for research use only, not for use in human, therapeutic or diagnostic procedure.

Background

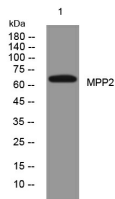
Palmitoylated membrane protein 2 is a member of a family of membrane-associated proteins termed MAGUKs (membrane-associated guanylate kinase homologs). MAGUKs interact with the cytoskeleton and regulate cell proliferation| signaling pathways| and intracellular junctions. Palmitoylated membrane protein 2 contains a conserved sequence| called the SH3 (src homology 3) motif| found in several other proteins that associate with the cytoskeleton and are suspected to play important roles in signal transduction.

Recommended Dilution

WB: 1: 500 - 1: 2000

Not yet tested in other applications.

Images



Western blot analysis of lysates from SH-SY5Y cells, primary antibody was diluted at 1:1000, 4°C overnight

Storage

-20°C for 1 year