

GPR1 Polyclonal Antibody

Description

Product type	Primary Antibody
Code	BT-AP03667
Host	Rabbit
Isotype	IgG
Size	20ul, 50ul, 100ul
Immunogen	The antiserum was produced against synthesized peptide derived from human GPR1. AA range:121-170
Mol wt	41431
Species reactivity	Human, Mouse, Rat
Clonality	Polyclonal
Recommended application	IF, ELISA
Concentration	1 mg/ml
Full name	GPR1 Antibody
Synonyms	GPR1; G-protein coupled receptor 1

This product is for research use only, not for use in human, therapeutic or diagnostic procedure.

Background

Receptor for the inflammation-associated leukocyte chemoattractant chemerin/RARRES2 suggesting a role for this receptor in the regulation of inflammation. Can act as a coreceptor for HIV-1.

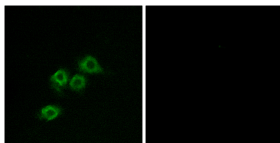
Recommended Dilution

IF: 1: 200 - 1: 1000

ELISA: 1: 5000

Not yet tested in other applications.

Images



Immunofluorescence analysis of MCF7 cells, using GPR1 Antibody. The picture on the right is blocked with the synthesized peptide.

Storage

-20°C for one year

501 Changsheng S Rd, Nanhu Dist, Jiaxing, Zhejiang, China

Tel: 86 21 31007137 | E-mail: save@bt-laboratory.com | www.bt-laboratory.com