

GPR10 Polyclonal Antibody

Description

Product type	Primary Antibody
Code	BT-AP03668
Host	Rabbit
Isotype	IgG
Size	20ul, 50ul, 100ul
Immunogen	The antiserum was produced against synthesized peptide derived from human PRLHR. AA range:184-233
Mol wt	41107
Species reactivity	Human, Mouse, Rat
Clonality	Polyclonal
Recommended application	WB, IF, ELISA
Concentration	1 mg/ml
Full name	GPR10 Antibody
Synonyms	PRLHR; GPR10; GR3; Prolactin-releasing peptide receptor; PrRP receptor; PrRPR; G-protein coupled receptor 10; hGR3

This product is for research use only, not for use in human, therapeutic or diagnostic procedure.

Background

PRLHR is a 7-transmembrane domain receptor for prolactin-releasing hormone (PRLH; MIM 602663) that is highly expressed in anterior pituitary (Ozawa et al. 2002 [PubMed 11923475]).

Recommended Dilution

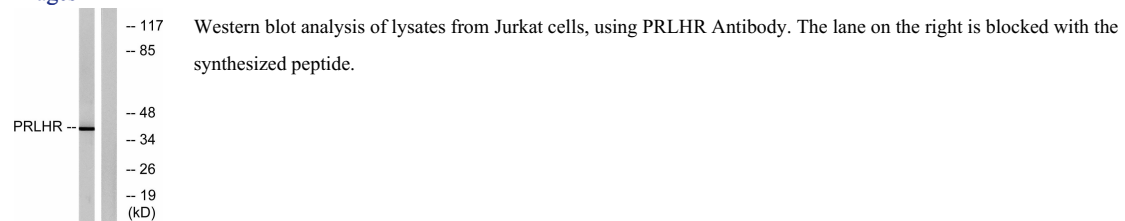
WB: 1: 500 - 1: 2000

IF: 1: 200 - 1: 1000

ELISA: 1: 20000

Not yet tested in other applications.

Images



Storage

-20°C for one year