

GPR100 Polyclonal Antibody

Description

Product type	Primary Antibody
Code	BT-AP03669
Host	Rabbit
Isotype	IgG
Size	20ul, 50ul, 100ul
Immunogen	The antiserum was produced against synthesized peptide derived from human GPR100. AA range:321-370
Mol wt	41141
Species reactivity	Human
Clonality	Polyclonal
Recommended application	WB, IF, ELISA
Concentration	1 mg/ml
Full name	GPR100 Antibody
Synonyms	RXFP4; GPR100; RLN3R2; Relaxin-3 receptor 2; RLN3 receptor 2; G-protein coupled receptor 100; G-protein coupled receptor GPCR142; Insulin-like peptide INSL5 receptor; Relaxin family peptide receptor 4

This product is for research use only, not for use in human, therapeutic or diagnostic procedure.

Background

GPR100 is a member of the rhodopsin family of G protein-coupled receptors (GPRs) (Fredriksson et al. 2003 [PubMed 14623098]).

Recommended Dilution

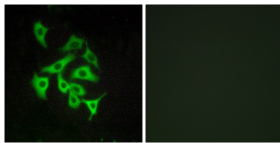
WB: 1: 500 - 1: 2000

IF: 1: 200 - 1: 1000

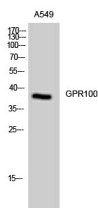
ELISA: 1: 20000

Not yet tested in other applications.

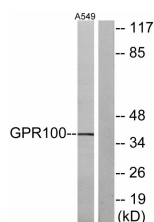
Images



Immunofluorescence analysis of A549 cells, using GPR100 Antibody. The picture on the right is blocked with the synthesized peptide.



Western Blot analysis of A549 cells using GPR100 Polyclonal Antibody



Western blot analysis of lysates from A549 cells, using GPR100 Antibody. The lane on the right is blocked with the synthesized peptide.

Storage

-20°C for one year

501 Changsheng S Rd, Nanhu Dist, Jiaxing, Zhejiang, China

Tel: 86 21 31007137 | E-mail: save@bt-laboratory.com | www.bt-laboratory.com