

GPR101 Polyclonal Antibody

Description

Product type	Primary Antibody
Code	BT-AP03671
Host	Rabbit
Isotype	IgG
Size	20ul, 50ul, 100ul
Immunogen	The antiserum was produced against synthesized peptide derived from human GPR101. AA range:451-500
Mol wt	56716
Species reactivity	Human, Mouse, Monkey
Clonality	Polyclonal
Recommended application	WB, IF, ELISA
Concentration	1 mg/ml
Full name	GPR101 Antibody
Synonyms	GPR101; Probable G-protein coupled receptor 101

This product is for research use only, not for use in human, therapeutic or diagnostic procedure.

Background

Probable G-protein coupled receptor 101 encoded by GPR101 is an orphan G protein-coupled receptor of unknown function. Probable G-protein coupled receptor 101 is a member of a family of proteins that contain seven transmembrane domains and transduce extracellular signals through heterotrimeric G proteins.

Recommended Dilution

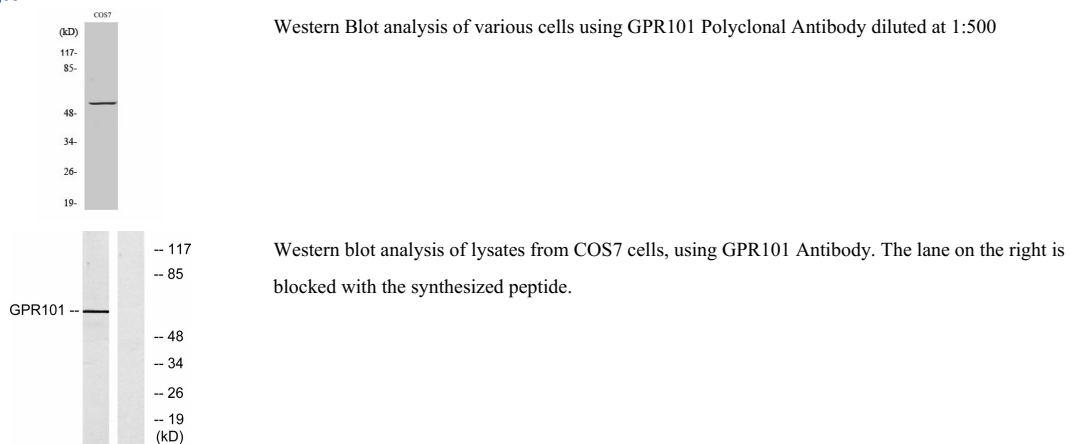
WB: 1: 500 - 1: 2000

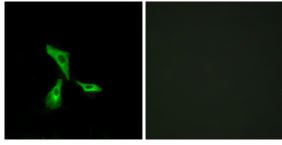
IF: 1: 200 - 1: 1000

ELISA: 1: 5000

Not yet tested in other applications.

Images





Immunofluorescence analysis of HeLa cells, using GPR101 Antibody. The picture on the right is blocked with the synthesized peptide.

Storage

-20°C for one year

501 Changsheng S Rd, Nanhu Dist, Jiaxing, Zhejiang, China

Tel: 86 21 31007137 | E-mail: save@bt-laboratory.com | www.bt-laboratory.com