

## GPR103 Polyclonal Antibody

### Description

<b>Product type</b>	Primary Antibody
<b>Code</b>	BT-AP03672
<b>Host</b>	Rabbit
<b>Isotype</b>	IgG
<b>Size</b>	20ul, 50ul, 100ul
<b>Immunogen</b>	The antiserum was produced against synthesized peptide derived from human GPR103. AA range:271-320
<b>Mol wt</b>	49488
<b>Species reactivity</b>	Human, Mouse, Rat
<b>Clonality</b>	Polyclonal
<b>Recommended application</b>	WB, IF, ELISA
<b>Concentration</b>	1 mg/ml
<b>Full name</b>	GPR103 Antibody
<b>Synonyms</b>	QRFPR; GPR103; Pyroglutamylated RFamide peptide receptor; AQ27; G-protein coupled receptor 103; Orexigenic neuropeptide QRFP receptor; SP9155

**This product is for research use only, not for use in human, therapeutic or diagnostic procedure.**

### Background

QRFPR (Pyroglutamylated RFamide Peptide Receptor) is a Protein Coding gene. Among its related pathways are Peptide ligand-binding receptors and Interleukin-3, 5 and GM-CSF signaling. GO annotations related to this gene include G-protein coupled receptor activity and neuropeptide Y receptor activity. An important paralog of this gene is NPY1R.

### Recommended Dilution

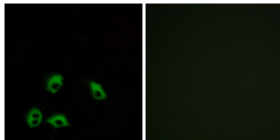
WB: 1: 500 - 1: 2000

IF: 1: 200 - 1: 1000

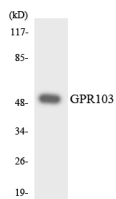
ELISA: 1: 10000

Not yet tested in other applications.

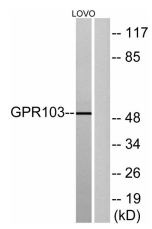
### Images



Immunofluorescence analysis of MCF7 cells, using GPR103 Antibody. The picture on the right is blocked with the synthesized peptide.



Western blot analysis of the lysates from Jurkat cells using GPR103 antibody.



Western blot analysis of lysates from LOVO cells, using GPR103 Antibody. The lane on the right is blocked with the synthesized peptide.

### Storage

-20°C for one year

501 Changsheng S Rd, Nanhu Dist, Jiaxing, Zhejiang, China

Tel: 86 21 31007137 | E-mail: [save@bt-laboratory.com](mailto:save@bt-laboratory.com) | [www.bt-laboratory.com](http://www.bt-laboratory.com)