

GPR103 Polyclonal Antibody

Description

Product type	Primary Antibody
Code	BT-AP03673
Host	Rabbit
Isotype	IgG
Size	20ul, 50ul, 100ul
Immunogen	The antiserum was produced against synthesized peptide derived from human GPR103. AA range:351-400
Mol wt	49488
Species reactivity	Human
Clonality	Polyclonal
Recommended application	WB, IF, ELISA
Concentration	1 mg/ml
Full name	GPR103 Antibody
Synonyms	QRFPR; GPR103; Pyroglutamylated RFamide peptide receptor; AQ27; G-protein coupled receptor 103; Orexigenic neuropeptide QRFP receptor; SP9155

This product is for research use only, not for use in human, therapeutic or diagnostic procedure.

Background

QRFPR (Pyroglutamylated RFamide Peptide Receptor) is a Protein Coding gene. Among its related pathways are Peptide ligand-binding receptors and Interleukin-3, 5 and GM-CSF signaling. GO annotations related to this gene include G-protein coupled receptor activity and neuropeptide Y receptor activity. An important paralog of this gene is NPY1R.

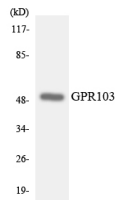
Recommended Dilution

WB: 1: 500 - 1: 2000

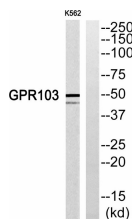
ELISA: 1: 5000

Not yet tested in other applications.

Images



Western blot analysis of the lysates from HUVEC cells using GPR103 antibody.



Western blot analysis of GPR103 Antibody. The lane on the right is blocked with the GPR103 peptide.

Storage

-20°C for one year

501 Changsheng S Rd, Nanhu Dist, Jiaxing, Zhejiang, China

Tel: 86 21 31007137 | E-mail: save@bt-laboratory.com | www.bt-laboratory.com