

GPR107 Polyclonal Antibody

Description

Product type	Primary Antibody
Code	BT-AP03675
Host	Rabbit
Isotype	IgG
Size	20ul, 50ul, 100ul
Immunogen	The antiserum was produced against synthesized peptide derived from human GPR107. AA range:141-190
Mol wt	66990
Species reactivity	Human
Clonality	Polyclonal
Recommended application	WB, IHC-p, IF, ELISA
Concentration	1 mg/ml
Full name	GPR107 Antibody
Synonyms	GPR107; KIAA1624; LUSTRI1; Protein GPR107; Lung seven transmembrane receptor 1

This product is for research use only, not for use in human, therapeutic or diagnostic procedure.

Background

GPR107 is a gene on chromosome 9q34.11 that encodes a transmembrane G protein-coupled receptor. Protein GPR107 involved in Golgi-to-ER retrograde transport. Functions as a host factor required for infection by *Pseudomonas aeruginosa* exotoxin A and *Campylobacter jejuni* CDT toxins.

Recommended Dilution

WB: 1: 500 - 1: 2000

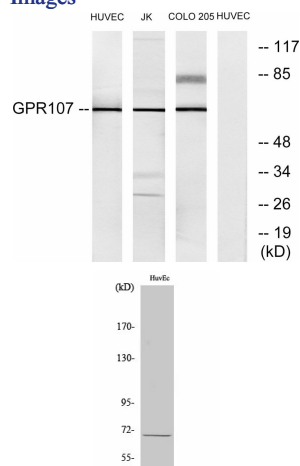
IHC: 1: 100 - 1: 300

IF: 1: 200 - 1: 1000

ELISA: 1: 5000

Not yet tested in other applications.

Images



Western blot analysis of lysates from HUVEC, Jurkat, and COLO205 cells, using GPR107 Antibody.

The lane on the right is blocked with the synthesized peptide.

Western Blot analysis of various cells using GPR107 Polyclonal Antibody

Storage

-20°C for one year

501 Changsheng S Rd, Nanhu Dist, Jiaxing, Zhejiang, China

Tel: 86 21 31007137 | E-mail: save@bt-laboratory.com | www.bt-laboratory.com