

## GPR108 Polyclonal Antibody

### Description

Product type	Primary Antibody
Code	BT-AP03676
Host	Rabbit
Isotype	IgG
Size	20ul, 50ul, 100ul
Immunogen	The antiserum was produced against synthesized peptide derived from human GPR108. AA range:155-204
Mol wt	60661
Species reactivity	Human
Clonality	Polyclonal
Recommended application	WB, IF, ELISA
Concentration	1 mg/ml
Full name	GPR108 Antibody
Synonyms	GPR108; LUSTR2; Protein GPR108; Lung seven transmembrane receptor 2

This product is for research use only, not for use in human, therapeutic or diagnostic procedure.

### Background

GPR108 is a gene on chromosome 19p13.3 that encodes a transmembrane G protein-coupled receptor. An important paralog of this gene is GPR107.

### Recommended Dilution

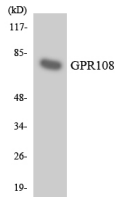
WB: 1: 500 - 1: 2000

IF: 1: 200 - 1: 1000

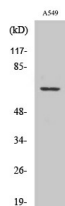
ELISA: 1: 5000

Not yet tested in other applications.

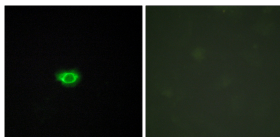
### Images



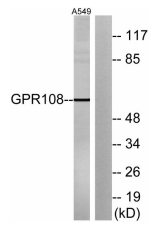
Western blot analysis of the lysates from HT-29 cells using GPR108 antibody.



Western Blot analysis of various cells using GPR108 Polyclonal Antibody



Immunofluorescence analysis of HUVEC cells, using GPR108 Antibody. The picture on the right is blocked with the synthesized peptide.



Western blot analysis of lysates from A549 cells, using GPR108 Antibody. The lane on the right is blocked with the synthesized peptide.

### Storage

-20°C for one year

501 Changsheng S Rd, Nanhu Dist, Jiaxing, Zhejiang, China

Tel: 86 21 31007137 | E-mail: [save@bt-laboratory.com](mailto:save@bt-laboratory.com) | [www.bt-laboratory.com](http://www.bt-laboratory.com)