

GPR110 Polyclonal Antibody

Description

Product type	Primary Antibody
Code	BT-AP03677
Host	Rabbit
Isotype	IgG
Size	20ul, 50ul, 100ul
Immunogen	The antiserum was produced against synthesized peptide derived from human GPR110. AA range:831-880
Mol wt	101464
Species reactivity	Human
Clonality	Polyclonal
Recommended application	WB, IF, ELISA
Concentration	1 mg/ml
Full name	GPR110 Antibody
Synonyms	GPR110; PGR19; Probable G-protein coupled receptor 110; G-protein coupled receptor KPG_012; G-protein coupled receptor PGR19

This product is for research use only, not for use in human, therapeutic or diagnostic procedure.

Background

GPR110 is a gene on chromosome 6p12.3 that encodes an orphan G protein-coupled receptor. Probable G-protein coupled receptor 110 is a protein that in humans is encoded by the GPR110 gene. This gene encodes a member of the adhesion-GPCR receptor family. Family members are characterized by an extended extracellular region with a variable number of N-terminal protein modules coupled to a TM7 region via a domain known as the GPCR-Autoproteolysis INducing (GAIN) domain.

Recommended Dilution

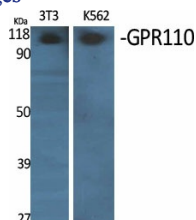
WB: 1: 500 - 1: 2000

IF: 1: 200 - 1: 1000

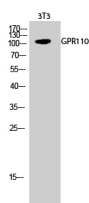
ELISA: 1: 40000

Not yet tested in other applications.

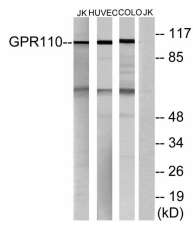
Images



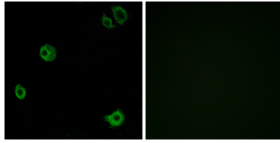
Western Blot analysis of various cells using GPR110 Polyclonal Antibody



Western Blot analysis of 3T3 cells using GPR110 Polyclonal Antibody



Western blot analysis of lysates from Jurkat, HUVEC, and COLO cells, using GPR110 Antibody.
The lane on the right is blocked with the synthesized peptide.



Immunofluorescence analysis of A549 cells, using GPR110 Antibody. The picture on the right is blocked with the synthesized peptide.

Storage

-20°C for one year

501 Changsheng S Rd, Nanhu Dist, Jiaxing, Zhejiang, China

Tel: 86 21 31007137 | E-mail: save@bt-laboratory.com | www.bt-laboratory.com