

GPR113 Polyclonal Antibody

Description

Product type	Primary Antibody
Code	BT-AP03678
Host	Rabbit
Isotype	IgG
Size	20ul, 50ul, 100ul
Immunogen	The antiserum was produced against synthesized peptide derived from human GPR113. AA range:21-70
Mol wt	116341
Species reactivity	Human
Clonality	Polyclonal
Recommended application	WB, ELISA
Concentration	1 mg/ml
Full name	GPR113 Antibody
Synonyms	GPR113; PGR23; Probable G-protein coupled receptor 113; G-protein coupled receptor PGR23

This product is for research use only, not for use in human, therapeutic or diagnostic procedure.

Background

ADGRF3 (Adhesion G Protein-Coupled Receptor F3) is a Protein Coding gene. GO annotations related to this gene include G-protein coupled receptor activity and transmembrane signaling receptor activity. An important paralog of this gene is ADGRG7. rphan receptor.

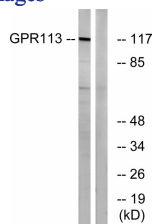
Recommended Dilution

WB: 1: 500 - 1: 2000

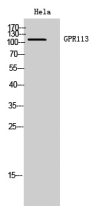
ELISA: 1: 40000

Not yet tested in other applications.

Images



Western blot analysis of lysates from LOVO cells, using GPR113 Antibody. The lane on the right is blocked with the synthesized peptide.



Western Blot analysis of HeLa cells using GPR113 Polyclonal Antibody diluted at 1:2000

Storage

-20°C for one year