

## GPR114 Polyclonal Antibody

### Description

<b>Product type</b>	Primary Antibody
<b>Code</b>	BT-AP03679
<b>Host</b>	Rabbit
<b>Isotype</b>	IgG
<b>Size</b>	20ul, 50ul, 100ul
<b>Immunogen</b>	The antiserum was produced against synthesized peptide derived from human GPR114. AA range:91-140
<b>Mol wt</b>	59000
<b>Species reactivity</b>	Human
<b>Clonality</b>	Polyclonal
<b>Recommended application</b>	WB, IF, ELISA
<b>Concentration</b>	1 mg/ml
<b>Full name</b>	GPR114 Antibody
<b>Synonyms</b>	GPR114; PGR27; Probable G-protein coupled receptor 114; G-protein coupled receptor PGR27

**This product is for research use only, not for use in human, therapeutic or diagnostic procedure.**

### Background

ADGRG5 encodes a member of the adhesion family of G-protein coupled receptors. Members of this family are characterized by long N-termini and multiple functional domains. They may play a role in the immune system as well as in the central nervous system. Alternative splicing results in multiple transcript variants.

### Recommended Dilution

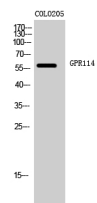
WB: 1: 500 - 1: 2000

IF: 1: 200 - 1: 1000

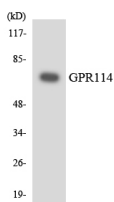
ELISA: 1: 5000

Not yet tested in other applications.

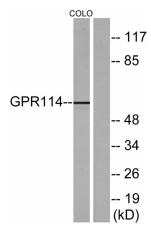
### Images



Western Blot analysis of COLO205 cells using GPR114 Polyclonal Antibody



Western blot analysis of the lysates from 293 cells using GPR114 antibody.



Western blot analysis of lysates from COLO205 cells, using GPR114 Antibody. The lane on the right is blocked with the synthesized peptide.

### Storage

-20°C for one year

501 Changsheng S Rd, Nanhu Dist, Jiaxing, Zhejiang, China

Tel: 86 21 31007137 | E-mail: [save@bt-laboratory.com](mailto:save@bt-laboratory.com) | [www.bt-laboratory.com](http://www.bt-laboratory.com)