

GPR115 Polyclonal Antibody

Description

Product type	Primary Antibody
Code	BT-AP03681
Host	Rabbit
Isotype	IgG
Size	20ul, 50ul, 100ul
Immunogen	The antiserum was produced against synthesized peptide derived from human GPR115. AA range:321-370
Mol wt	59000
Species reactivity	Human
Clonality	Polyclonal
Recommended application	WB, ELISA
Concentration	1 mg/ml
Full name	GPR115 Antibody
Synonyms	GPR115; PGR18; Probable G-protein coupled receptor 115; G-protein coupled receptor PGR18

This product is for research use only, not for use in human, therapeutic or diagnostic procedure.

Background

ADGRG5 encodes a member of the adhesion family of G-protein coupled receptors. Members of this family are characterized by long N-termini and multiple functional domains. They may play a role in the immune system as well as in the central nervous system. Alternative splicing results in multiple transcript variants.

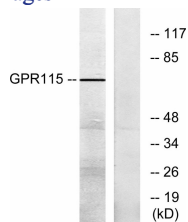
Recommended Dilution

WB: 1: 500 - 1: 2000

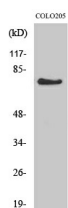
ELISA: 1: 5000

Not yet tested in other applications.

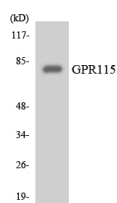
Images



Western blot analysis of lysates from COLO205 cells, using GPR115 Antibody. The lane on the right is blocked with the synthesized peptide.



Western Blot analysis of various cells using GPR115 Polyclonal Antibody



Western blot analysis of the lysates from Jurkat cells using GPR115 antibody.

Storage

-20°C for one year

501 Changsheng S Rd, Nanhu Dist, Jiaxing, Zhejiang, China

Tel: 86 21 31007137 | E-mail: save@bt-laboratory.com | www.bt-laboratory.com