

GPR116 Polyclonal Antibody

Description

Product type	Primary Antibody
Code	BT-AP03682
Host	Rabbit
Isotype	IgG
Size	20ul, 50ul, 100ul
Immunogen	The antiserum was produced against synthesized peptide derived from human GPR116. AA range:1121-1170
Mol wt	149457
Species reactivity	Human
Clonality	Polyclonal
Recommended application	IHC-p, IF, ELISA
Concentration	1 mg/ml
Full name	GPR116 Antibody
Synonyms	GPR116; KIAA0758; Probable G-protein coupled receptor 116

This product is for research use only, not for use in human, therapeutic or diagnostic procedure.

Background

ADGRF5 (Adhesion G Protein-Coupled Receptor F5) is a Protein Coding gene. Among its related pathways are Transport to the Golgi and subsequent modification and Surfactant metabolism. GO annotations related to this gene include G-protein coupled receptor activity and transmembrane signaling receptor activity. An important paralog of this gene is ADGRG7. eceptor that plays a critical role in lung surfactant homeostasis. May play a role in controlling adipocyte function.

Recommended Dilution

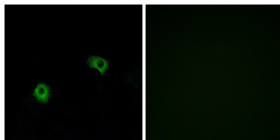
IHC: 1: 100 - 1: 300

IF: 1: 200 - 1: 1000

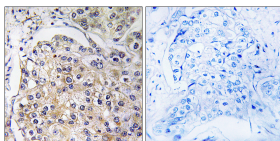
ELISA: 1: 40000

Not yet tested in other applications.

Images



Immunofluorescence analysis of A549 cells, using GPR116 Antibody. The picture on the right is blocked with the synthesized peptide.



Immunohistochemistry analysis of paraffin-embedded human breast carcinoma tissue, using GPR116 Antibody. The picture on the right is blocked with the synthesized peptide.

Storage

-20°C for one year