

GPR116 Polyclonal Antibody

Description

Product type	Primary Antibody
Code	BT-AP03683
Host	Rabbit
Isotype	IgG
Size	20ul, 50ul, 100ul
Immunogen	The antiserum was produced against synthesized peptide derived from human GPR116. AA range:11-60
Mol wt	149457
Species reactivity	Human
Clonality	Polyclonal
Recommended application	WB, IHC-p, IF, ELISA
Concentration	1 mg/ml
Full name	GPR116 Antibody
Synonyms	GPR116; KIAA0758; Probable G-protein coupled receptor 116

This product is for research use only, not for use in human, therapeutic or diagnostic procedure.

Background

GPR116 is a gene on chromosome 6p12.3 that encodes a G protein-coupled receptor that may have a role in regulating the acid-base balance. Probable G-protein coupled receptor 116 that plays a critical role in lung surfactant homeostasis. May play a role in controlling adipocyte function. Among its related pathways are Transport to the Golgi and subsequent modification and Surfactant metabolism. Gene Ontology (GO) annotations related to this gene include G-protein coupled receptor activity and transmembrane signaling receptor activity. An important paralog of this gene is ADGRG7.

Recommended Dilution

WB: 1: 500 - 1: 2000

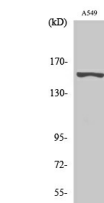
IHC: 1: 100 - 1: 300

IF: 1: 200 - 1: 1000

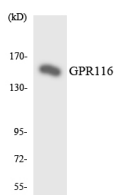
ELISA: 1: 5000

Not yet tested in other applications.

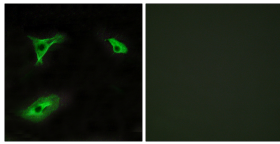
Images



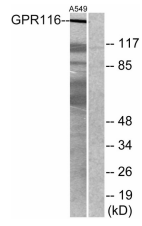
Western Blot analysis of various cells using GPR116 Polyclonal Antibody diluted at 1:500



Western blot analysis of the lysates from HeLa cells using GPR116 antibody.



Immunofluorescence analysis of HeLa cells, using GPR116 Antibody. The picture on the right is blocked with the synthesized peptide.



Western blot analysis of lysates from A549 cells, using GPR116 Antibody. The lane on the right is blocked with the synthesized peptide.

Storage

-20°C for one year

501 Changsheng S Rd, Nanhu Dist, Jiaxing, Zhejiang, China

Tel: 86 21 31007137 | E-mail: save@bt-laboratory.com | www.bt-laboratory.com