

GPR119 Polyclonal Antibody

Description

Product type	Primary Antibody
Code	BT-AP03684
Host	Rabbit
Isotype	IgG
Size	20ul, 50ul, 100ul
Immunogen	The antiserum was produced against synthesized peptide derived from human GPR119. AA range:186-235
Mol wt	36889
Species reactivity	Human
Clonality	Polyclonal
Recommended application	WB, IF, ELISA
Concentration	1 mg/ml
Full name	GPR119 Antibody
Synonyms	GPR119; Glucose-dependent insulintropic receptor; G-protein coupled receptor 119

This product is for research use only, not for use in human, therapeutic or diagnostic procedure.

Background

GPR119 encodes a member of the rhodopsin subfamily of G-protein-coupled receptors that is expressed in the pancreas and gastrointestinal tract. The G protein-coupled receptor 119 is activated by lipid amides including lysophosphatidylcholine and oleoylethanolamide and may be involved in glucose homeostasis. This protein is a potential drug target in the treatment of type 2 diabetes.

Recommended Dilution

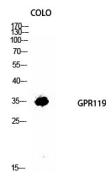
WB: 1: 500 - 1: 2000

IF: 1: 200 - 1: 1000

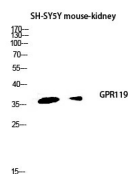
ELISA: 1: 10000

Not yet tested in other applications.

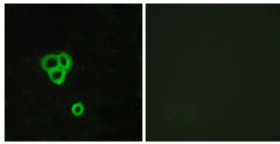
Images



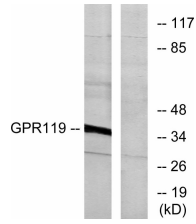
Western Blot analysis of COLO cells using GPR119 Polyclonal Antibody diluted at 1:1000



Western blot analysis of SH-SY5Y mouse-kidney lysis using GPR119 antibody. Antibody was diluted at 1:1000



Immunofluorescence analysis of MCF7 cells, using GPR119 Antibody. The picture on the right is blocked with the synthesized peptide.



Western blot analysis of lysates from K562 cells, using GPR119 Antibody. The lane on the right is blocked with the synthesized peptide.

Storage

-20°C for one year

501 Changsheng S Rd, Nanhu Dist, Jiaxing, Zhejiang, China

Tel: 86 21 31007137 | E-mail: save@bt-laboratory.com | www.bt-laboratory.com