

GPR120 Polyclonal Antibody

Description

Product type	Primary Antibody
Code	BT-AP03686
Host	Rabbit
Isotype	IgG
Size	20ul, 50ul, 100ul
Immunogen	The antiserum was produced against synthesized peptide derived from human GPR120. AA range:221-270
Mol wt	42241
Species reactivity	Human, Mouse, Rat
Clonality	Polyclonal
Recommended application	WB, IF, ELISA
Concentration	1 mg/ml
Full name	GPR120 Antibody
Synonyms	O3FAR1; GPR120; GPR129; PGR4; Omega-3 fatty acid receptor 1; G-protein coupled receptor 120; G-protein coupled receptor 129; G-protein coupled receptor GT01; G-protein coupled receptor PGR4

This product is for research use only, not for use in human, therapeutic or diagnostic procedure.

Background

O3FAR1 encodes a G protein-coupled receptor (GPR) which belongs to the rhodopsin family of GPRs. Omega-3 fatty acid receptor 1 functions as a receptor for free fatty acids, including omega-3, and participates in suppressing anti-inflammatory responses and insulin sensitizing. Multiple transcript variants encoding different isoforms have been found for this gene.

Recommended Dilution

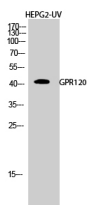
WB: 1: 500 - 1: 2000

IF: 1: 200 - 1: 1000

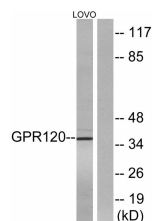
ELISA: 1: 5000

Not yet tested in other applications.

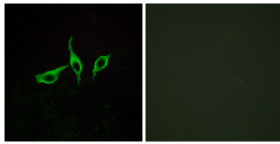
Images



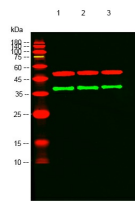
Western Blot analysis of HEPG2-UV cells using GPR120 Polyclonal Antibody diluted at 1:500



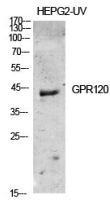
Western blot analysis of lysates from LOVO cells, using GPR120 Antibody. The lane on the right is blocked with the synthesized peptide.



Immunofluorescence analysis of LOVO cells, using GPR120 Antibody. The picture on the right is blocked with the synthesized peptide.



Western blot analysis of lysates from 1) HEPG2-UV, 2) HEK-293T, 3) LOVO cells, (Green) primary antibody was diluted at 1:1000, 4° over night, secondary antibody (cat:RS23920) was diluted at 1:10000, 37° 1 hour. (Red) Tubulin β Monoclonal Antibody (5G3) (cat:YM3030) antibody was diluted at 1:5000 as loading control, 4° over night, secondary antibody (cat:RS23710) was diluted at 1:10000, 37° 1 hour.



Western Blot analysis of various cells using GPR120 Polyclonal Antibody diluted at 1:500

Storage

-20°C for one year

501 Changsheng S Rd, Nanhu Dist, Jiaxing, Zhejiang, China

Tel: 86 21 31007137 | E-mail: save@bt-laboratory.com | www.bt-laboratory.com