

GPR123 Polyclonal Antibody

Description

Product type	Primary Antibody
Code	BT-AP03687
Host	Rabbit
Isotype	IgG
Size	20ul, 50ul, 100ul
Immunogen	The antiserum was produced against synthesized peptide derived from human GPR123. AA range:201-250
Mol wt	137203
Species reactivity	Human
Clonality	Polyclonal
Recommended application	IF, ELISA
Concentration	1 mg/ml
Full name	GPR123 Antibody
Synonyms	GPR123; KIAA1828; Probable G-protein coupled receptor 123

This product is for research use only, not for use in human, therapeutic or diagnostic procedure.

Background

ADGRA1 (adhesion G protein-coupled receptor A1) encodes a protein that belongs to the adhesion family of G-protein-coupled receptors. Members of this family function in several sensory systems and regulate blood pressure, immune responses, food intake and development. A similar protein in rodents is thought to play a role in the regulation of neuronal signaling pathways. Several alternatively spliced transcript variants of ADGRA1 have been described, but the full-length nature of some of these variants has not been determined.

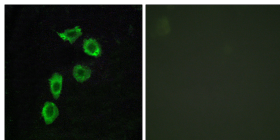
Recommended Dilution

IF: 1: 200 - 1: 1000

ELISA: 1: 5000

Not yet tested in other applications.

Images



Immunofluorescence analysis of HUVEC cells, using GPR123 Antibody. The picture on the right is blocked with the synthesized peptide.

Storage

-20°C for one year

501 Changsheng S Rd, Nanhui Dist, Jiaxing, Zhejiang, China

Tel: 86 21 31007137 | E-mail: save@bt-laboratory.com | www.bt-laboratory.com