

GPR124 Polyclonal Antibody

Description

Product type	Primary Antibody
Code	BT-AP03688
Host	Rabbit
Isotype	IgG
Size	20ul, 50ul, 100ul
Immunogen	The antiserum was produced against synthesized peptide derived from human GPR124. AA range:1151-1200
Mol wt	141962
Species reactivity	Human, Mouse
Clonality	Polyclonal
Recommended application	WB, IF, ELISA
Concentration	1 mg/ml
Full name	GPR124 Antibody
Synonyms	GPR124; KIAA1531; TEM5; G-protein coupled receptor 124; Tumor endothelial marker 5

This product is for research use only, not for use in human, therapeutic or diagnostic procedure.

Background

ADGRA2 (Adhesion G Protein-Coupled Receptor A2) is a Protein Coding gene. Among its related pathways are Integrins in angiogenesis. GO annotations related to this gene include G-protein coupled receptor activity and transmembrane signaling receptor activity. An important paralog of this gene is ADGRA1. ndothelial receptor which functions as a WNT7-specific coactivator of canonical Wnt signaling (By similarity). Required for normal endothelial cell sprouting and migration in the forebrain and neural tube (By similarity). Has a major role in establishing the blood-brain barrier (By similarity). Binds to the glycosaminoglycans heparin, heparin sulfate, chondroitin sulfate and dermatan sulfate (PubMed: 16982628).

Recommended Dilution

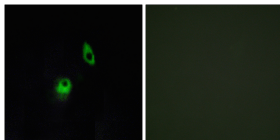
WB: 1: 500 - 1: 2000

IF: 1: 200 - 1: 1000

ELISA: 1: 10000

Not yet tested in other applications.

Images



Immunofluorescence analysis of HeLa cells, using GPR124 Antibody. The picture on the right is blocked with the synthesized peptide.

Storage

-20°C for one year