

## GPR126 Polyclonal Antibody

### Description

<b>Product type</b>	Primary Antibody
<b>Code</b>	BT-AP03689
<b>Host</b>	Rabbit
<b>Isotype</b>	IgG
<b>Size</b>	20ul, 50ul, 100ul
<b>Immunogen</b>	The antiserum was produced against synthesized peptide derived from human GPR126. AA range:431-480
<b>Mol wt</b>	136636
<b>Species reactivity</b>	Human
<b>Clonality</b>	Polyclonal
<b>Recommended application</b>	WB, IHC-p, IF, ELISA
<b>Concentration</b>	1 mg/ml
<b>Full name</b>	GPR126 Antibody
<b>Synonyms</b>	GPR126; DREG; VIGR; G-protein coupled receptor 126; Developmentally regulated G-protein-coupled receptor; Vascular inducible G protein-coupled receptor

**This product is for research use only, not for use in human, therapeutic or diagnostic procedure.**

### Background

GPR126, which is upregulated in human umbilical vein endothelial cells, encodes G-protein coupled receptor 126. Variations in GPR126 can affect a person's stature. Multiple transcript variants encoding different proteins have been found for this gene.

### Recommended Dilution

WB: 1: 500 - 1: 2000

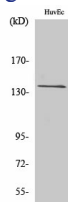
IHC: 1: 100 - 1: 300

IF: 1: 200 - 1: 1000

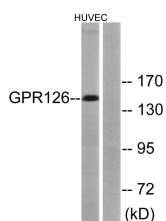
ELISA: 1: 5000

Not yet tested in other applications.

### Images



Western Blot analysis of various cells using GPR126 Polyclonal Antibody diluted at 1:500



Western blot analysis of lysates from HUVEC cells, using GPR126 Antibody. The lane on the right is blocked with the synthesized peptide.

## Storage

-20°C for one year

501 Changsheng S Rd, Nanhu Dist, Jiaxing, Zhejiang, China

Tel: 86 21 31007137 | E-mail: [save@bt-laboratory.com](mailto:save@bt-laboratory.com) | [www.bt-laboratory.com](http://www.bt-laboratory.com)