

GPR133 Polyclonal Antibody

Description

Product type	Primary Antibody
Code	BT-AP03691
Host	Rabbit
Isotype	IgG
Size	20ul, 50ul, 100ul
Immunogen	The antiserum was produced against synthesized peptide derived from human GPR133. AA range:461-510
Mol wt	96530
Species reactivity	Human, Monkey
Clonality	Polyclonal
Recommended application	WB, IF, ELISA
Concentration	1 mg/ml
Full name	GPR133 Antibody
Synonyms	GPR133; PGR25; Probable G-protein coupled receptor 133; G-protein coupled receptor PGR25

This product is for research use only, not for use in human, therapeutic or diagnostic procedure.

Background

The adhesion G-protein-coupled receptors (GPCRs), including GPR133, are membrane-bound proteins with long N termini containing multiple domains. GPCRs, or GPRs, contain 7 transmembrane domains and transduce extracellular signals through heterotrimeric G proteins (summary by Bjarnadottir et al. 2004 [PubMed 15203201]).

Recommended Dilution

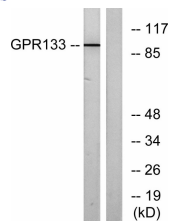
WB: 1: 500 - 1: 2000

IF: 1: 200 - 1: 1000

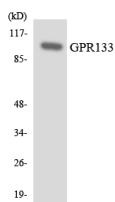
ELISA: 1: 5000

Not yet tested in other applications.

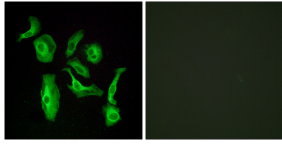
Images



Western blot analysis of lysates from COS7 cells, using GPR133 Antibody. The lane on the right is blocked with the synthesized peptide.



Western blot analysis of the lysates from K562 cells using GPR133 antibody.



Immunofluorescence analysis of HeLa cells, using GPR133 Antibody. The picture on the right is blocked with the synthesized peptide.

Storage

-20°C for one year

501 Changsheng S Rd, Nanhu Dist, Jiaxing, Zhejiang, China

Tel: 86 21 31007137 | E-mail: save@bt-laboratory.com | www.bt-laboratory.com