

## GPR135 Polyclonal Antibody

### Description

<b>Product type</b>	Primary Antibody
<b>Code</b>	BT-AP03692
<b>Host</b>	Rabbit
<b>Isotype</b>	IgG
<b>Size</b>	20ul, 50ul, 100ul
<b>Immunogen</b>	The antiserum was produced against synthesized peptide derived from human GPR135. AA range:371-420
<b>Mol wt</b>	51736
<b>Species reactivity</b>	Human, Mouse, Rat
<b>Clonality</b>	Polyclonal
<b>Recommended application</b>	WB, IHC-p, IF, ELISA
<b>Concentration</b>	1 mg/ml
<b>Full name</b>	GPR135 Antibody
<b>Synonyms</b>	GPR135; Probable G-protein coupled receptor 135

This product is for research use only, not for use in human, therapeutic or diagnostic procedure.

### Background

GPR135 (G Protein-Coupled Receptor 135) is a Protein Coding gene. Among its related pathways are GPCRs, Other. GO annotations related to this gene include G-protein coupled receptor activity. An important paralog of this gene is GPR45.

### Recommended Dilution

WB: 1: 500 - 1: 2000

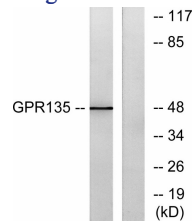
IHC: 1: 100 - 1: 300

IF: 1: 200 - 1: 1000

ELISA: 1: 5000

Not yet tested in other applications.

### Images



Western blot analysis of lysates from NIH/3T3 cells, using GPR135 Antibody. The lane on the right is blocked with the synthesized peptide.

### Storage

-20°C for one year