

## GPR142 Polyclonal Antibody

### Description

<b>Product type</b>	Primary Antibody
<b>Code</b>	BT-AP03695
<b>Host</b>	Rabbit
<b>Isotype</b>	IgG
<b>Size</b>	20ul, 50ul, 100ul
<b>Immunogen</b>	The antiserum was produced against synthesized peptide derived from human GPR142. AA range:1-50
<b>Mol wt</b>	51106
<b>Species reactivity</b>	Human
<b>Clonality</b>	Polyclonal
<b>Recommended application</b>	WB, IF, ELISA
<b>Concentration</b>	1 mg/ml
<b>Full name</b>	GPR142 Antibody
<b>Synonyms</b>	GPR142; PGR2; Probable G-protein coupled receptor 142; G-protein coupled receptor PGR2

**This product is for research use only, not for use in human, therapeutic or diagnostic procedure.**

### Background

GPR142 is a member of the rhodopsin family of G protein-coupled receptors (GPRs). PR142 (G Protein-Coupled Receptor 142) is a Protein Coding gene. GO annotations related to this gene include G-protein coupled receptor activity. An important paralog of this gene is GPR139.

### Recommended Dilution

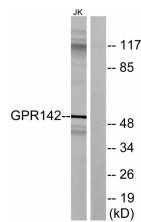
WB: 1: 500 - 1: 2000

IF: 1: 200 - 1: 1000

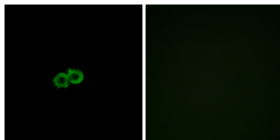
ELISA: 1: 10000

Not yet tested in other applications.

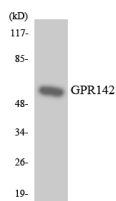
### Images



Western blot analysis of lysates from Jurkat cells, using GPR142 Antibody. The lane on the right is blocked with the synthesized peptide.



Immunofluorescence analysis of A549 cells, using GPR142 Antibody. The picture on the right is blocked with the synthesized peptide.



Western blot analysis of the lysates from HeLa cells using GPR142 antibody.

## Storage

-20°C for one year

501 Changsheng S Rd, Nanhu Dist, Jiaxing, Zhejiang, China

Tel: 86 21 31007137 | E-mail: [save@bt-laboratory.com](mailto:save@bt-laboratory.com) | [www.bt-laboratory.com](http://www.bt-laboratory.com)