

## GPR143 Polyclonal Antibody

### Description

<b>Product type</b>	Primary Antibody
<b>Code</b>	BT-AP03696
<b>Host</b>	Rabbit
<b>Isotype</b>	IgG
<b>Size</b>	20ul, 50ul, 100ul
<b>Immunogen</b>	The antiserum was produced against synthesized peptide derived from human GPR143. AA range:151-200
<b>Mol wt</b>	43878
<b>Species reactivity</b>	Human, Mouse
<b>Clonality</b>	Polyclonal
<b>Recommended application</b>	IF, ELISA
<b>Concentration</b>	1 mg/ml
<b>Full name</b>	GPR143 Antibody
<b>Synonyms</b>	GPR143; OA1; G-protein coupled receptor 143; Ocular albinism type 1 protein

**This product is for research use only, not for use in human, therapeutic or diagnostic procedure.**

### Background

GPR143 encodes a protein that binds to heterotrimeric G proteins and is targeted to melanosomes in pigment cells. This protein is thought to be involved in intracellular signal transduction mechanisms. Mutations in GPR143 cause ocular albinism type 1, also referred to as Nettleship-Falls type ocular albinism, a severe visual disorder. A related pseudogene has been identified on chromosome Y.

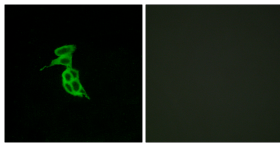
### Recommended Dilution

IF: 1: 200 - 1: 1000

ELISA: 1: 10000

Not yet tested in other applications.

### Images



Immunofluorescence analysis of LOVO cells, using GPR143 Antibody. The picture on the right is blocked with the synthesized peptide.

### Storage

-20°C for one year

501 Changsheng S Rd, Nanhu Dist, Jiaxing, Zhejiang, China

Tel: 86 21 31007137 | E-mail: [save@bt-laboratory.com](mailto:save@bt-laboratory.com) | [www.bt-laboratory.com](http://www.bt-laboratory.com)