

GPR146 Polyclonal Antibody

Description

Product type	Primary Antibody
Code	BT-AP03698
Host	Rabbit
Isotype	IgG
Size	20ul, 50ul, 100ul
Immunogen	The antiserum was produced against synthesized peptide derived from human GPR146. AA range:191-240
Mol wt	36580
Species reactivity	Human
Clonality	Polyclonal
Recommended application	WB, IF, ELISA
Concentration	1 mg/ml
Full name	GPR146 Antibody
Synonyms	GPR146; PGR8; Probable G-protein coupled receptor 146; G-protein coupled receptor PGR8

This product is for research use only, not for use in human, therapeutic or diagnostic procedure.

Background

Orphan receptor.

Recommended Dilution

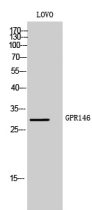
WB: 1: 500 - 1: 2000

IF: 1: 200 - 1: 1000

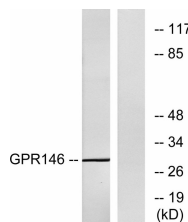
ELISA: 1: 5000

Not yet tested in other applications.

Images



Western Blot analysis of LOVO cells using GPR146 Polyclonal Antibody



Western blot analysis of lysates from LOVO cells, using GPR146 Antibody. The lane on the right is blocked with the synthesized peptide.

Storage

-20°C for one year