

GPR149 Polyclonal Antibody

Description

Product type	Primary Antibody
Code	BT-AP03699
Host	Rabbit
Isotype	IgG
Size	20ul, 50ul, 100ul
Immunogen	The antiserum was produced against synthesized peptide derived from human GPR149. AA range:451-500
Mol wt	80984
Species reactivity	Human
Clonality	Polyclonal
Recommended application	WB, IHC-p, IF, ELISA
Concentration	1 mg/ml
Full name	GPR149 Antibody
Synonyms	GPR149; PGR10; Probable G-protein coupled receptor 149; G-protein coupled receptor PGR10

This product is for research use only, not for use in human, therapeutic or diagnostic procedure.

Background

GPR149 (G Protein-Coupled Receptor 149) is a Protein Coding gene. GO annotations related to this gene include G-protein coupled receptor activity and neuropeptide binding.

Recommended Dilution

WB: 1: 500 - 1: 2000

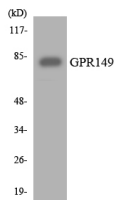
IHC: 1: 100 - 1: 300

IF: 1: 200 - 1: 1000

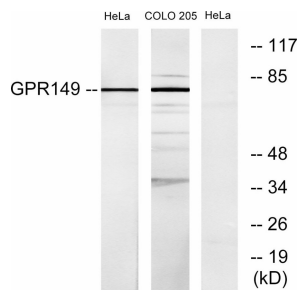
ELISA: 1: 5000

Not yet tested in other applications.

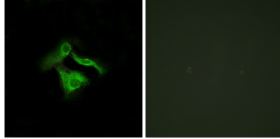
Images



Western blot analysis of the lysates from 293 cells using GPR149 antibody.



Western blot analysis of lysates from HeLa and COLO205 cells, using GPR149 Antibody. The lane on the right is blocked with the synthesized peptide.



Immunofluorescence analysis of HeLa cells, using GPR149 Antibody. The picture on the right is blocked with the synthesized peptide.

Storage

-20°C for one year

501 Changsheng S Rd, Nanhu Dist, Jiaxing, Zhejiang, China

Tel: 86 21 31007137 | E-mail: save@bt-laboratory.com | www.bt-laboratory.com