

GPR150 Polyclonal Antibody

Description

Product type	Primary Antibody
Code	BT-AP03702
Host	Rabbit
Isotype	IgG
Size	20ul, 50ul, 100ul
Immunogen	The antiserum was produced against synthesized peptide derived from human GPR150. AA range:51-100
Mol wt	46353
Species reactivity	Human, Mouse
Clonality	Polyclonal
Recommended application	IF, ELISA
Concentration	1 mg/ml
Full name	GPR150 Antibody
Synonyms	GPR150; Probable G-protein coupled receptor 150

This product is for research use only, not for use in human, therapeutic or diagnostic procedure.

Background

Orphan receptor.

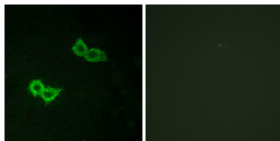
Recommended Dilution

IF: 1: 200 - 1: 1000

ELISA: 1: 5000

Not yet tested in other applications.

Images



Immunofluorescence analysis of HepG2 cells, using GPR150 Antibody. The picture on the right is blocked with the synthesized peptide.

Storage

-20°C for one year