

## GPR151 Polyclonal Antibody

### Description

Product type	Primary Antibody
Code	BT-AP03703
Host	Rabbit
Isotype	IgG
Size	20ul, 50ul, 100ul
Immunogen	The antiserum was produced against synthesized peptide derived from human GPR151. AA range:276-325
Mol wt	46637
Species reactivity	Human
Clonality	Polyclonal
Recommended application	WB, IF, ELISA
Concentration	1 mg/ml
Full name	GPR151 Antibody
Synonyms	GPR151; PGR7; Probable G-protein coupled receptor 151; G-protein coupled receptor PGR7; GPCR-2037

This product is for research use only, not for use in human, therapeutic or diagnostic procedure.

### Background

Orphan receptor.

### Recommended Dilution

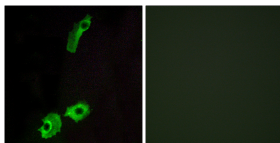
WB: 1: 500 - 1: 2000

IF: 1: 200 - 1: 1000

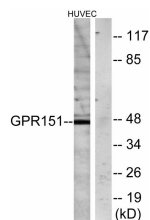
ELISA: 1: 20000

Not yet tested in other applications.

### Images



Immunofluorescence analysis of HeLa cells, using GPR151 Antibody. The picture on the right is blocked with the synthesized peptide.



Western blot analysis of lysates from HUVEC cells, using GPR151 Antibody. The lane on the right is blocked with the synthesized peptide.

### Storage

-20°C for one year