

GPR152 Polyclonal Antibody

Description

Product type	Primary Antibody
Code	BT-AP03705
Host	Rabbit
Isotype	IgG
Size	20ul, 50ul, 100ul
Immunogen	The antiserum was produced against synthesized peptide derived from human GPR152. AA range:301-350
Mol wt	50962
Species reactivity	Human
Clonality	Polyclonal
Recommended application	IF, ELISA
Concentration	1 mg/ml
Full name	GPR152 Antibody
Synonyms	GPR152; PGR5; Probable G-protein coupled receptor 152; G-protein coupled receptor PGR5

This product is for research use only, not for use in human, therapeutic or diagnostic procedure.

Background

GPR152 is a gene on chromosome 11q13. that encodes an orphan G protein-coupled receptor. Probable G-protein coupled receptor 152 is a orphan receptor. Gene Ontology (GO) annotations related to this gene include G-protein coupled receptor activity. An important paralog of this gene is FPR2.

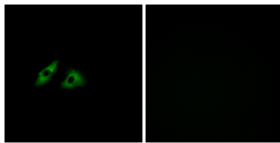
Recommended Dilution

IF: 1: 200 - 1: 1000

ELISA: 1: 5000

Not yet tested in other applications.

Images



Immunofluorescence analysis of HeLa cells, using GPR152 Antibody. The picture on the right is blocked with the synthesized peptide.

Storage

-20°C for one year

501 Changsheng S Rd, Nanhu Dist, Jiaxing, Zhejiang, China

Tel: 86 21 31007137 | E-mail: save@bt-laboratory.com | www.bt-laboratory.com