

GPR152 Polyclonal Antibody

Description

Product type	Primary Antibody
Code	BT-AP03706
Host	Rabbit
Isotype	IgG
Size	20ul, 50ul, 100ul
Immunogen	The antiserum was produced against synthesized peptide derived from human GPR152. AA range:10-59
Mol wt	50962
Species reactivity	Human
Clonality	Polyclonal
Recommended application	WB, IF, ELISA
Concentration	1 mg/ml
Full name	GPR152 Antibody
Synonyms	GPR152; PGR5; Probable G-protein coupled receptor 152; G-protein coupled receptor PGR5

This product is for research use only, not for use in human, therapeutic or diagnostic procedure.

Background

GPR152 is a gene on chromosome 11q13. that encodes an orphan G protein-coupled receptor. Probable G-protein coupled receptor 152 is a orphan receptor. Gene Ontology (GO) annotations related to this gene include G-protein coupled receptor activity. An important paralog of this gene is FPR2.

Recommended Dilution

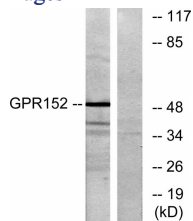
WB: 1: 500 - 1: 2000

IF: 1: 200 - 1: 1000

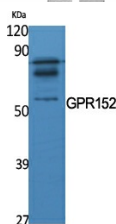
ELISA: 1: 20000

Not yet tested in other applications.

Images

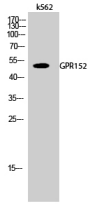


Western blot analysis of lysates from Jurkat cells, using GPR152 Antibody. The lane on the right is blocked with the synthesized peptide.



Western Blot analysis of various cells using GPR152 Polyclonal Antibody

Western Blot analysis of k562 cells using GPR152 Polyclonal Antibody



Storage

-20°C for one year

501 Changsheng S Rd, Nanhu Dist, Jiaxing, Zhejiang, China

Tel: 86 21 31007137 | E-mail: save@bt-laboratory.com | www.bt-laboratory.com