

GPR153 Polyclonal Antibody

Description

Product type	Primary Antibody
Code	BT-AP03708
Host	Rabbit
Isotype	IgG
Size	20ul, 50ul, 100ul
Immunogen	The antiserum was produced against synthesized peptide derived from human GPR153. AA range:195-244
Mol wt	65361
Species reactivity	Human, Mouse
Clonality	Polyclonal
Recommended application	WB, IHC-p, IF, ELISA
Concentration	1 mg/ml
Full name	GPR153 Antibody
Synonyms	GPR153; PGR1; Probable G-protein coupled receptor 153; G-protein coupled receptor PGR1

This product is for research use only, not for use in human, therapeutic or diagnostic procedure.

Background

GPR153 (G Protein-Coupled Receptor 153) is a Protein Coding gene. GO annotations related to this gene include G-protein coupled receptor activity. An important paralog of this gene is GPR162.

Recommended Dilution

WB: 1: 500 - 1: 2000

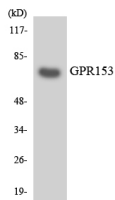
IHC: 1: 100 - 1: 300

IF: 1: 200 - 1: 1000

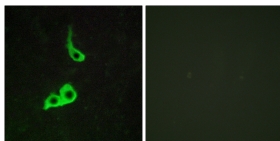
ELISA: 1: 10000

Not yet tested in other applications.

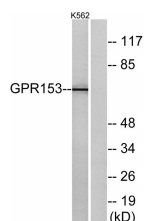
Images



Western blot analysis of the lysates from HepG2 cells using GPR153 antibody.



Immunofluorescence analysis of LOVO cells, using GPR153 Antibody. The picture on the right is blocked with the synthesized peptide.



Western blot analysis of lysates from K562 cells, using GPR153 Antibody. The lane on the right is blocked with the synthesized peptide.

Storage

-20°C for one year

501 Changsheng S Rd, Nanhu Dist, Jiaxing, Zhejiang, China

Tel: 86 21 31007137 | E-mail: save@bt-laboratory.com | www.bt-laboratory.com