

GPR156 Polyclonal Antibody

Description

Product type	Primary Antibody
Code	BT-AP03709
Host	Rabbit
Isotype	IgG
Size	20ul, 50ul, 100ul
Immunogen	The antiserum was produced against synthesized peptide derived from human GPR156. AA range:501-550
Mol wt	89083
Species reactivity	Human
Clonality	Polyclonal
Recommended application	WB, IF, ELISA
Concentration	1 mg/ml
Full name	GPR156 Antibody
Synonyms	GPR156; GABABL; PGR28; Probable G-protein coupled receptor 156; G-protein coupled receptor PGR28; GABAB-related G-protein coupled receptor

This product is for research use only, not for use in human, therapeutic or diagnostic procedure.

Background

G protein-coupled receptors (GPCRs) are a large superfamily of cell surface receptors characterized by 7 helical transmembrane domains, together with N-terminal extracellular and C-terminal intracellular domains. GPR156, is a human gene which encodes G protein-coupled receptor 156 belonging to metabotropic glutamate receptor subfamily. By sequence homology, this gene was proposed as being a possible GABAB receptor subunit, however when expressed in cells alone or with other GABAB subunits, no response to GABAB ligands could be detected. Therefore, the function of this protein remains to be elucidated.

Recommended Dilution

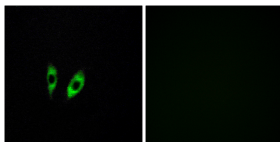
WB: 1: 500 - 1: 2000

IF: 1: 200 - 1: 1000

ELISA: 1: 5000

Not yet tested in other applications.

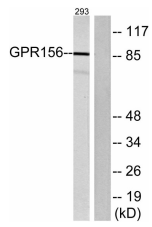
Images



Immunofluorescence analysis of HeLa cells, using GPR156 Antibody. The picture on the right is blocked with the synthesized peptide.



Western Blot analysis of various cells using GPR156 Polyclonal Antibody



Storage

-20°C for one year

501 Changsheng S Rd, Nanhu Dist, Jiaxing, Zhejiang, China

Tel: 86 21 31007137 | E-mail: save@bt-laboratory.com | www.bt-laboratory.com