

GPR157 Polyclonal Antibody

Description

| | |
|--------------------------------|---|
| Product type | Primary Antibody |
| Code | BT-AP03710 |
| Host | Rabbit |
| Isotype | IgG |
| Size | 20ul, 50ul, 100ul |
| Immunogen | The antiserum was produced against synthesized peptide derived from human GPR157. AA range:81-130 |
| Mol wt | 36623 |
| Species reactivity | Human |
| Clonality | Polyclonal |
| Recommended application | WB, IF, ELISA |
| Concentration | 1 mg/ml |
| Full name | GPR157 Antibody |
| Synonyms | GPR157; Probable G-protein coupled receptor 157 |

This product is for research use only, not for use in human, therapeutic or diagnostic procedure.

Background

GPR157 (G Protein-Coupled Receptor 157) is a Protein Coding gene. Diseases associated with GPR157 include stromal dystrophy. GO annotations related to this gene include G-protein coupled receptor activity and transmembrane signaling receptor activity.

Recommended Dilution

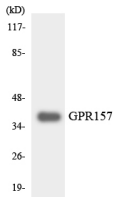
WB: 1: 500 - 1: 2000

IF: 1: 200 - 1: 1000

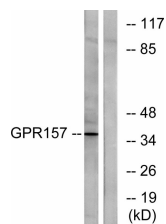
ELISA: 1: 5000

Not yet tested in other applications.

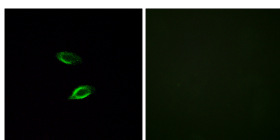
Images



Western blot analysis of the lysates from RAW264.7 cells using GPR157 antibody.



Western blot analysis of lysates from NIH/3T3 cells, using GPR157 Antibody. The lane on the right is blocked with the synthesized peptide.



Immunofluorescence analysis of HUVEC cells, using GPR157 Antibody. The picture on the right is blocked with the synthesized peptide.

Storage

-20°C for one year

501 Changsheng S Rd, Nanhu Dist, Jiaxing, Zhejiang, China

Tel: 86 21 31007137 | E-mail: save@bt-laboratory.com | www.bt-laboratory.com