

GPR158 Polyclonal Antibody

Description

Product type	Primary Antibody
Code	BT-AP03711
Host	Rabbit
Isotype	IgG
Size	20ul, 50ul, 100ul
Immunogen	The antiserum was produced against synthesized peptide derived from human GPR158. AA range:1-50
Mol wt	135489
Species reactivity	Human, Mouse
Clonality	Polyclonal
Recommended application	WB, IHC-p, IF, ELISA
Concentration	1 mg/ml
Full name	GPR158 Antibody
Synonyms	GPR158; KIAA1136; Probable G-protein coupled receptor 158

This product is for research use only, not for use in human, therapeutic or diagnostic procedure.

Background

GPR158 (G Protein-Coupled Receptor 158) is a Protein Coding gene. Diseases associated with GPR158 include smallpox. GO annotations related to this gene include G-protein coupled receptor activity. An important paralog of this gene is GPR179.

Recommended Dilution

WB: 1: 500 - 1: 2000

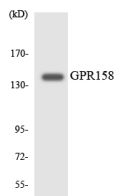
IHC: 1: 100 - 1: 300

IF: 1: 200 - 1: 1000

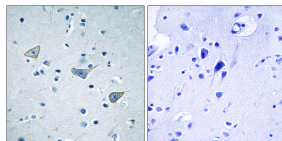
ELISA: 1: 5000

Not yet tested in other applications.

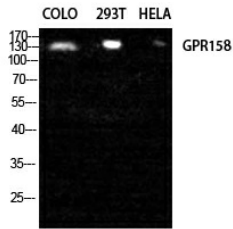
Images



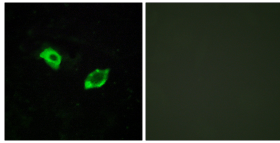
Western blot analysis of the lysates from HeLa cells using GPR158 antibody.



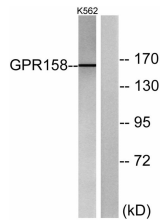
Immunohistochemistry analysis of paraffin-embedded human brain tissue, using GPR158 Antibody. The picture on the right is blocked with the synthesized peptide.



Western Blot analysis of COLO 293T HELA cells using GPR158 Polyclonal Antibody diluted at 1:2000



Immunofluorescence analysis of HUVEC cells, using GPR158 Antibody. The picture on the right is blocked with the synthesized peptide.



Western blot analysis of lysates from K562 cells, using GPR158 Antibody. The lane on the right is blocked with the synthesized peptide.

Storage

-20°C for one year

501 Changsheng S Rd, Nanhu Dist, Jiaxing, Zhejiang, China

Tel: 86 21 31007137 | E-mail: save@bt-laboratory.com | www.bt-laboratory.com