

GPR160 Polyclonal Antibody

Description

Product type	Primary Antibody
Code	BT-AP03712
Host	Rabbit
Isotype	IgG
Size	20ul, 50ul, 100ul
Immunogen	The antiserum was produced against synthesized peptide derived from human GPR160. AA range:289-338
Mol wt	39787
Species reactivity	Human
Clonality	Polyclonal
Recommended application	WB, IHC-p, IF, ELISA
Concentration	1 mg/ml
Full name	GPR160 Antibody
Synonyms	GPR160; GPCR150; Probable G-protein coupled receptor 160; G-protein coupled receptor GPCR1; hGPCR1

This product is for research use only, not for use in human, therapeutic or diagnostic procedure.

Background

Orphan receptor.

Recommended Dilution

WB: 1: 500 - 1: 2000

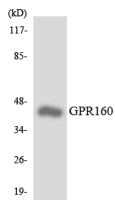
IHC: 1: 100 - 1: 300

IF: 1: 200 - 1: 1000

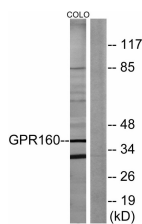
ELISA: 1: 10000

Not yet tested in other applications.

Images



Western blot analysis of the lysates from HUVEC cells using GPR160 antibody.



Western blot analysis of lysates from COLO205 cells, using GPR160 Antibody. The lane on the right is blocked with the synthesized peptide.

Storage

-20°C for one year

501 Changsheng S Rd, Nanhu Dist, Jiaxing, Zhejiang, China

Tel: 86 21 31007137 | E-mail: save@bt-laboratory.com | www.bt-laboratory.com