

GPR171 Polyclonal Antibody

Description

Product type	Primary Antibody
Code	BT-AP03715
Host	Rabbit
Isotype	IgG
Size	20ul, 50ul, 100ul
Immunogen	The antiserum was produced against synthesized peptide derived from human GPR171. AA range:141-190
Mol wt	36754
Species reactivity	Human, Mouse
Clonality	Polyclonal
Recommended application	WB, IF, ELISA
Concentration	1 mg/ml
Full name	GPR171 Antibody
Synonyms	GPR171; H963; Probable G-protein coupled receptor 171; G-protein coupled receptor H963

This product is for research use only, not for use in human, therapeutic or diagnostic procedure.

Background

Orphan receptor.

Recommended Dilution

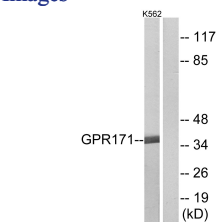
WB: 1: 500 - 1: 2000

IF: 1: 200 - 1: 1000

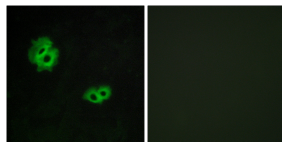
ELISA: 1: 5000

Not yet tested in other applications.

Images



Western blot analysis of lysates from K562 cells, using GPR171 Antibody. The lane on the right is blocked with the synthesized peptide.



Immunofluorescence analysis of MCF7 cells, using GPR171 Antibody. The picture on the right is blocked with the synthesized peptide.

Storage

-20°C for one year