

GPR171 Polyclonal Antibody

Description

Product type	Primary Antibody
Code	BT-AP03716
Host	Rabbit
Isotype	IgG
Size	20ul, 50ul, 100ul
Immunogen	The antiserum was produced against synthesized peptide derived from human GPR171. AA range:181-230
Mol wt	36754
Species reactivity	Human
Clonality	Polyclonal
Recommended application	WB, IF, ELISA
Concentration	1 mg/ml
Full name	GPR171 Antibody
Synonyms	GPR171; H963; Probable G-protein coupled receptor 171; G-protein coupled receptor H963

This product is for research use only, not for use in human, therapeutic or diagnostic procedure.

Background

GPR171 is a gene on chromosome 3q25.1 that encodes an orphan G protein-coupled receptor. Probable G-protein coupled receptor 171 is a orphan receptor. Among its related pathways are Peptide ligand-binding receptors. Gene Ontology (GO) annotations related to this gene include G-protein coupled receptor activity and G-protein coupled purinergic nucleotide receptor activity. An important paralog of this gene is P2RY14.

Recommended Dilution

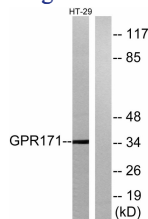
WB: 1: 500 - 1: 2000

IF: 1: 200 - 1: 1000

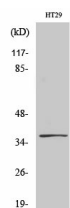
ELISA: 1: 10000

Not yet tested in other applications.

Images



Western blot analysis of lysates from HT-29 cells, using GPR171 Antibody. The lane on the right is blocked with the synthesized peptide.



Western Blot analysis of various cells using GPR171 Polyclonal Antibody

Storage

-20°C for one year

501 Changsheng S Rd, Nanhu Dist, Jiaxing, Zhejiang, China

Tel: 86 21 31007137 | E-mail: save@bt-laboratory.com | www.bt-laboratory.com