

## GPR173 Polyclonal Antibody

### Description

<b>Product type</b>	Primary Antibody
<b>Code</b>	BT-AP03719
<b>Host</b>	Rabbit
<b>Isotype</b>	IgG
<b>Size</b>	20ul, 50ul, 100ul
<b>Immunogen</b>	The antiserum was produced against synthesized peptide derived from human GPR173. AA range:251-300
<b>Mol wt</b>	41481
<b>Species reactivity</b>	Human, Mouse, Rat
<b>Clonality</b>	Polyclonal
<b>Recommended application</b>	WB, IF, ELISA
<b>Concentration</b>	1 mg/ml
<b>Full name</b>	GPR173 Antibody
<b>Synonyms</b>	GPR173; SREB3; Probable G-protein coupled receptor 173; Super conserved receptor expressed in brain 3

**This product is for research use only, not for use in human, therapeutic or diagnostic procedure.**

### Background

GPR173 (G protein-coupled receptor 173) encodes a member of the G-protein coupled receptor 1 family. This protein contains 7 transmembrane domains and conserved cysteine residues.

### Recommended Dilution

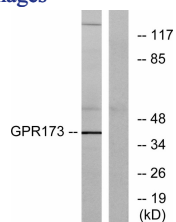
WB: 1: 500 - 1: 2000

IF: 1: 200 - 1: 1000

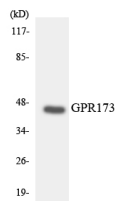
ELISA: 1: 40000

Not yet tested in other applications.

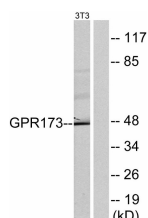
### Images



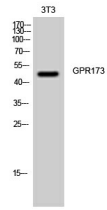
Western blot analysis of lysates from K562 cells, using GPR173 Antibody. The lane on the right is blocked with the synthesized peptide.



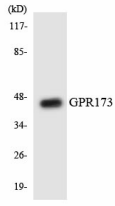
Western blot analysis of the lysates from HeLa cells using GPR173 antibody.



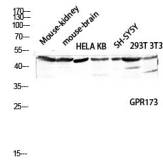
Western blot analysis of lysates from NIH/3T3 cells, using GPR173 Antibody. The lane on the right is blocked with the synthesized peptide.



Western Blot analysis of 3T3 cells using GPR173 Polyclonal Antibody diluted at 1:2000



Western blot analysis of the lysates from COLO205 cells using GPR173 antibody.



Western blot analysis of Mouse-kidney mouse-brain HELA KB SH-SY5Y 293T 3T3 lysis using GPR173 antibody. Antibody was diluted at 1:2000

### Storage

-20°C for one year

501 Changsheng S Rd, Nanhu Dist, Jiaxing, Zhejiang, China

Tel: 86 21 31007137 | E-mail: [save@bt-laboratory.com](mailto:save@bt-laboratory.com) | [www.bt-laboratory.com](http://www.bt-laboratory.com)