

## GPR175 Polyclonal Antibody

### Description

<b>Product type</b>	Primary Antibody
<b>Code</b>	BT-AP03724
<b>Host</b>	Rabbit
<b>Isotype</b>	IgG
<b>Size</b>	20ul, 50ul, 100ul
<b>Immunogen</b>	The antiserum was produced against synthesized peptide derived from human GPR175. AA range:198-247
<b>Mol wt</b>	41053
<b>Species reactivity</b>	Human, Mouse, Rat
<b>Clonality</b>	Polyclonal
<b>Recommended application</b>	WB, IF, ELISA
<b>Concentration</b>	1 mg/ml
<b>Full name</b>	GPR175 Antibody
<b>Synonyms</b>	TPRA1; GPR175; PP6566; Transmembrane protein adipocyte-associated 1; Integral membrane protein GPR175

This product is for research use only, not for use in human, therapeutic or diagnostic procedure.

### Background

TPRA1 is a gene on chromosome 3q21.3 that encodes transmembrane protein adipocyte-associated 1 expressed in most tissues, especially in heart, placenta and kidney, and plays role in lipid metabolism and in ageing. Gene Ontology (GO) annotations related to this gene include G-protein coupled receptor activity.

### Recommended Dilution

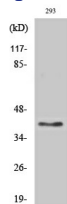
WB: 1: 500 - 1: 2000

IF: 1: 200 - 1: 1000

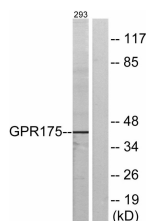
ELISA: 1: 20000

Not yet tested in other applications.

### Images



Western Blot analysis of various cells using GPR175 Polyclonal Antibody diluted at 1:2000



Western blot analysis of lysates from 293 cells, using GPR175 Antibody. The lane on the right is blocked with the synthesized peptide.

## Storage

-20°C for one year

501 Changsheng S Rd, Nanhu Dist, Jiaxing, Zhejiang, China

Tel: 86 21 31007137 | E-mail: [save@bt-laboratory.com](mailto:save@bt-laboratory.com) | [www.bt-laboratory.com](http://www.bt-laboratory.com)