

GPR176 Polyclonal Antibody

Description

Product type	Primary Antibody
Code	BT-AP03725
Host	Rabbit
Isotype	IgG
Size	20ul, 50ul, 100ul
Immunogen	The antiserum was produced against synthesized peptide derived from human GPR176. AA range:466-515
Mol wt	56998
Species reactivity	Human, Mouse, Rat
Clonality	Polyclonal
Recommended application	WB, IF, ELISA
Concentration	1 mg/ml
Full name	GPR176 Antibody
Synonyms	GPR176; Probable G-protein coupled receptor 176; HB-954

This product is for research use only, not for use in human, therapeutic or diagnostic procedure.

Background

Members of the G protein-coupled receptor family, such as GPR176, are cell surface receptors involved in responses to hormones, growth factors, and neurotransmitters. GPR176 is a Protein Coding gene. Diseases associated with GPR176 include waterhouse-friderichsen syndrome. G Protein-Coupled Receptor 176 is an orphan receptor. Among its related pathways are Signaling by GPCR and GPCRs, Other. Gene Ontology (GO) annotations related to this gene include G-protein coupled receptor activity. An important paralog of this gene is GPR161.

Recommended Dilution

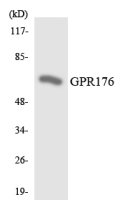
WB: 1: 500 - 1: 2000

IF: 1: 200 - 1: 1000

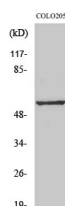
ELISA: 1: 10000

Not yet tested in other applications.

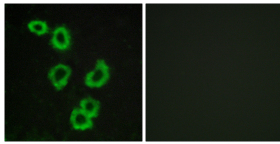
Images



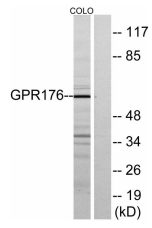
Western blot analysis of the lysates from HeLa cells using GPR176 antibody.



Western Blot analysis of various cells using GPR176 Polyclonal Antibody



Immunofluorescence analysis of MCF7 cells, using GPR176 Antibody. The picture on the right is blocked with the synthesized peptide.



Western blot analysis of lysates from COLO205 cells, using GPR176 Antibody. The lane on the right is blocked with the synthesized peptide.

Storage

-20°C for one year

501 Changsheng S Rd, Nanhu Dist, Jiaxing, Zhejiang, China

Tel: 86 21 31007137 | E-mail: save@bt-laboratory.com | www.bt-laboratory.com