

## GPR25 Polyclonal Antibody

### Description

<b>Product type</b>	Primary Antibody
<b>Code</b>	BT-AP03733
<b>Host</b>	Rabbit
<b>Isotype</b>	IgG
<b>Size</b>	20ul, 50ul, 100ul
<b>Immunogen</b>	The antiserum was produced against synthesized peptide derived from human GPR25. AA range:193-242
<b>Mol wt</b>	38779
<b>Species reactivity</b>	Human
<b>Clonality</b>	Polyclonal
<b>Recommended application</b>	WB, ELISA
<b>Concentration</b>	1 mg/ml
<b>Full name</b>	GPR25 Antibody
<b>Synonyms</b>	GPR25; Probable G-protein coupled receptor 25

This product is for research use only, not for use in human, therapeutic or diagnostic procedure.

### Background

GPR25 is intronless and encodes a member of the G-protein coupled receptor 1 family. G-protein coupled receptors are membrane proteins which activate signaling cascades as a response to extracellular stress. GPR25 has been linked to arterial stiffness.

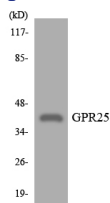
### Recommended Dilution

WB: 1: 500 - 1: 2000

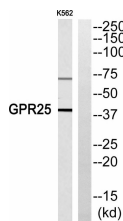
ELISA: 1: 5000

Not yet tested in other applications.

### Images



Western blot analysis of the lysates from K562 cells using GPR25 antibody.



Western blot analysis of GPR25 Antibody. The lane on the right is blocked with the GPR25 peptide.

### Storage

-20°C for one year