

GPR31 Polyclonal Antibody

Description

| | |
|-------------------------|--|
| Product type | Primary Antibody |
| Code | BT-AP03737 |
| Host | Rabbit |
| Isotype | IgG |
| Size | 20ul, 50ul, 100ul |
| Immunogen | The antiserum was produced against synthesized peptide derived from human GPR31. AA range:181-230 |
| Mol wt | 35075 |
| Species reactivity | Human |
| Clonality | Polyclonal |
| Recommended application | WB, ELISA |
| Concentration | 1 mg/ml |
| Full name | GPR31 Antibody |
| Synonyms | GPR31; 12-(S)-hydroxy-5; 8,10,14-eicosatetraenoic acid receptor; 12-(S)-HETE receptor; 12-HETER; G-protein coupled receptor 31 |

This product is for research use only, not for use in human, therapeutic or diagnostic procedure.

Background

GPR31 (G Protein-Coupled Receptor 31) is a Protein Coding gene. Among its related pathways are Signaling by GPCR and Peptide ligand-binding receptors. GO annotations related to this gene include G-protein coupled receptor activity. An important paralog of this gene is HCAR3. igh-affinity receptor for 12-(S)-hydroxy-5,8,10,14-eicosatetraenoic acid (12-S-HETE). 12-(S)-HETE is an arachidonic acid metabolite secreted by platelets and tumor cells, and known to induce endothelial cells retraction allowing invasive cell access to the subendothelial matrix, which is a critical step for extravasation or metastasis. Ligand-binding lead to activation of ERK1/2 (MAPK3/MAPK1), MEK, and NF-kappa-B.

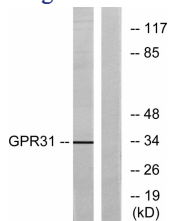
Recommended Dilution

WB: 1: 500 - 1: 2000

ELISA: 1: 5000

Not yet tested in other applications.

Images



Western blot analysis of lysates from COLO cells, using GPR31 Antibody. The lane on the right is blocked with the synthesized peptide.

Storage

-20°C for one year