

GPR32 Polyclonal Antibody

Description

Product type	Primary Antibody
Code	BT-AP03738
Host	Rabbit
Isotype	IgG
Size	20ul, 50ul, 100ul
Immunogen	The antiserum was produced against synthesized peptide derived from human GPR32. AA range:151-200
Mol wt	40087
Species reactivity	Human
Clonality	Polyclonal
Recommended application	WB, IF, ELISA
Concentration	1 mg/ml
Full name	GPR32 Antibody
Synonyms	GPR32; Probable G-protein coupled receptor 32

This product is for research use only, not for use in human, therapeutic or diagnostic procedure.

Background

GPR32 is intronless and encodes a member of the G-protein coupled receptor 1 family. The G protein-coupled receptor 32 binds to resolvin D1 and lipoxin A4 and has been linked to pulmonary inflammation. A related pseudogene has been identified on chromosome 19.

Recommended Dilution

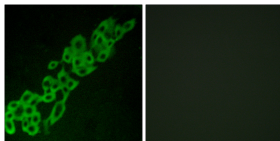
WB: 1: 500 - 1: 2000

IF: 1: 200 - 1: 1000

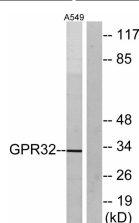
ELISA: 1: 20000

Not yet tested in other applications.

Images



Immunofluorescence analysis of A549 cells, using GPR32 Antibody. The picture on the right is blocked with the synthesized peptide.



Western blot analysis of lysates from A549 cells, using GPR32 Antibody. The lane on the right is blocked with the synthesized peptide.

Storage

-20°C for one year