

GPR34 Polyclonal Antibody

Description

Product type	Primary Antibody
Code	BT-AP03740
Host	Rabbit
Isotype	IgG
Size	20ul, 50ul, 100ul
Immunogen	The antiserum was produced against synthesized peptide derived from human GPR34. AA range:181-230
Mol wt	43860
Species reactivity	Human, Mouse, Rat, Monkey
Clonality	Polyclonal
Recommended application	WB, IF, ELISA
Concentration	1 mg/ml
Full name	GPR34 Antibody
Synonyms	GPR34; Probable G-protein coupled receptor 34

This product is for research use only, not for use in human, therapeutic or diagnostic procedure.

Background

Probable G-protein coupled receptor 34 is a protein that in humans is encoded by the GPR34 gene. G protein-coupled receptors (GPCRs), such as GPR34, are integral membrane proteins containing 7 putative transmembrane domains (TMs). These proteins mediate signals to the interior of the cell via activation of heterotrimeric G proteins that in turn activate various effector proteins, ultimately resulting in a physiologic response.

Recommended Dilution

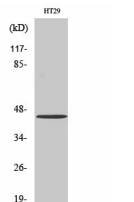
WB: 1: 500 - 1: 2000

IF: 1: 200 - 1: 1000

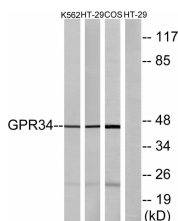
ELISA: 1: 10000

Not yet tested in other applications.

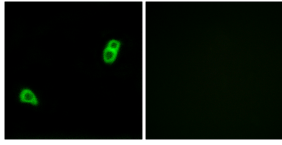
Images



Western Blot analysis of various cells using GPR34 Polyclonal Antibody



Western blot analysis of lysates from HT-29, K562, and COS7 cells, using GPR34 Antibody. The lane on the right is blocked with the synthesized peptide.



Immunofluorescence analysis of LOVO cells, using GPR34 Antibody. The picture on the right is blocked with the synthesized peptide.

Storage

-20°C for one year

501 Changsheng S Rd, Nanhu Dist, Jiaxing, Zhejiang, China

Tel: 86 21 31007137 | E-mail: save@bt-laboratory.com | www.bt-laboratory.com