

GPR35 Polyclonal Antibody

Description

Product type	Primary Antibody
Code	BT-AP03741
Host	Rabbit
Isotype	IgG
Size	20ul, 50ul, 100ul
Immunogen	The antiserum was produced against synthesized peptide derived from human GPR35. AA range:51-100
Mol wt	34072
Species reactivity	Human
Clonality	Polyclonal
Recommended application	WB, IF, ELISA
Concentration	1 mg/ml
Full name	GPR35 Antibody
Synonyms	GPR35; G-protein coupled receptor 35; Kynurenic acid receptor; KYNA receptor

This product is for research use only, not for use in human, therapeutic or diagnostic procedure.

Background

G protein-coupled receptors (GPRs), also known as seven transmembrane receptors, heptahelical receptors or 7TM receptors, comprise a superfamily of proteins that play a role in many different stimulus-response pathways. G protein coupled receptors translate extracellular signals into intracellular signals (G protein activation) and they respond to a variety of signaling molecules, such as hormones and neurotransmitters. GPR35 (G protein-coupled receptor 35) is a 309 amino acid multi-pass membrane protein that belongs to the G-protein coupled receptor 1 family. Expressed in adult and fetal tissues, including lung, pancreas, colon and intestine, GPR35 functions as an orphan receptor that is thought to play a role in signaling events throughout the cell.

Recommended Dilution

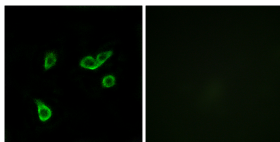
WB: 1: 500 - 1: 2000

IF: 1: 200 - 1: 1000

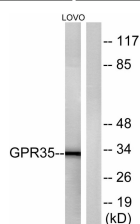
ELISA: 1: 20000

Not yet tested in other applications.

Images



Immunofluorescence analysis of A549 cells, using GPR35 Antibody. The picture on the right is blocked with the synthesized peptide.



Western blot analysis of lysates from LOVO cells, using GPR35 Antibody. The lane on the right is blocked with the synthesized peptide.

Storage

-20°C for one year

501 Changsheng S Rd, Nanhu Dist, Jiaxing, Zhejiang, China

Tel: 86 21 31007137 | E-mail: save@bt-laboratory.com | www.bt-laboratory.com