

## GPR37 Polyclonal Antibody

### Description

<b>Product type</b>	Primary Antibody
<b>Code</b>	BT-AP03742
<b>Host</b>	Rabbit
<b>Isotype</b>	IgG
<b>Size</b>	20ul, 50ul, 100ul
<b>Immunogen</b>	The antiserum was produced against synthesized peptide derived from human GPR37. AA range:211-260
<b>Mol wt</b>	67114
<b>Species reactivity</b>	Human, Mouse, Rat
<b>Clonality</b>	Polyclonal
<b>Recommended application</b>	WB, ELISA
<b>Concentration</b>	1 mg/ml
<b>Full name</b>	GPR37 Antibody
<b>Synonyms</b>	GPR37; Probable G-protein coupled receptor 37; Endothelin B receptor-like protein 1; ETBR-LP-1; Parkin-associated endothelin receptor-like receptor; PAELR

This product is for research use only, not for use in human, therapeutic or diagnostic procedure.

### Background

GPR37 is a member of the G protein-coupled receptor family. The G protein-coupled receptor 37 contains seven transmembrane domains and is found in cell and endoplasmic reticulum membranes. G protein-coupled receptors are involved in translating outside signals into G protein mediated intracellular effects. This gene product interacts with Parkin and is involved in juvenile Parkinson disease.

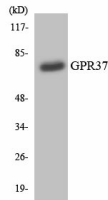
### Recommended Dilution

WB: 1: 500 - 1: 2000

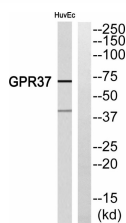
ELISA: 1: 10000

Not yet tested in other applications.

### Images



Western blot analysis of the lysates from HT-29 cells using GPR37 antibody.



Western blot analysis of GPR37 Antibody. The lane on the right is blocked with the GPR37 peptide.

## Storage

-20°C for one year

501 Changsheng S Rd, Nanhu Dist, Jiaxing, Zhejiang, China

Tel: 86 21 31007137 | E-mail: [save@bt-laboratory.com](mailto:save@bt-laboratory.com) | [www.bt-laboratory.com](http://www.bt-laboratory.com)