

GPR37L1 Polyclonal Antibody

Description

Product type	Primary Antibody
Code	BT-AP03743
Host	Rabbit
Isotype	IgG
Size	20ul, 50ul, 100ul
Immunogen	The antiserum was produced against synthesized peptide derived from human ETBR2. AA range:1-50
Mol wt	52829
Species reactivity	Human
Clonality	Polyclonal
Recommended application	WB, IHC-p, IF, ELISA
Concentration	1 mg/ml
Full name	GPR37L1 Antibody
Synonyms	GPR37L1; ETBRLP2; Endothelin B receptor-like protein 2; ETBR-LP-2; G-protein coupled receptor 37-like 1

This product is for research use only, not for use in human, therapeutic or diagnostic procedure.

Background

GPR37L1 (G Protein-Coupled Receptor 37 Like 1) is a Protein Coding gene. Among its related pathways are Peptide ligand-binding receptors and Signaling by GPCR. GO annotations related to this gene include G-protein coupled receptor activity and G-protein coupled peptide receptor activity. An important paralog of this gene is EDNRB.

Recommended Dilution

WB: 1: 500 - 1: 2000

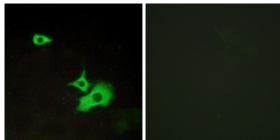
IHC: 1: 100 - 1: 300

IF: 1: 200 - 1: 1000

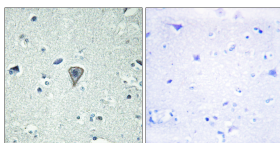
ELISA: 1: 10000

Not yet tested in other applications.

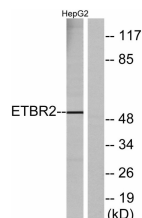
Images



Immunofluorescence analysis of LOVO cells, using ETBR2 Antibody. The picture on the right is blocked with the synthesized peptide.



Immunohistochemistry analysis of paraffin-embedded human brain tissue, using ETBR2 Antibody. The picture on the right is blocked with the synthesized peptide.



Western blot analysis of lysates from HepG2 cells, using ETBR2 Antibody. The lane on the right is blocked with the synthesized peptide.

Storage

-20°C for one year

501 Changsheng S Rd, Nanhu Dist, Jiaxing, Zhejiang, China

Tel: 86 21 31007137 | E-mail: save@bt-laboratory.com | www.bt-laboratory.com